

Chancellor's Weekend Memo



September 4, 2015 Number 1001



NEW COMPUTER (Virtual Client Environment) Rollout Plan Update District-wide

As part of the Information Technology Transformation Plan (ITTP), the Division of Information Technology (IT) is rolling out nearly 700 new, state of the art, virtualized computer systems replacing all desktop computers for students and faculty throughout the District.

The rollout project has multiple phases that will run for the next several months. Currently, Phase I (Critical Student Areas) is nearly completed.



**DOWNTOWN
CAMPUS**



**EASTERN
CAMPUS**



**DOWNRIVER
CAMPUS**



**WESTERN
CAMPUS**



**STEP 1- Dell WYSE
thin clients received**



**STEP 2- Unboxing and preparing
for deployment**



STEP 3- Installing the thin clients in classroom



STEP 4- Classroom completed





TECHNOLOGY IS 24/7 AND SO IS THE DISTRICT IT STAFF!



Staff in the Division of Information Technology worked around the clock to ensure new virtual clients in the identified critical areas were deployed for the beginning of the Fall 2015 semester!



Phase 1 of the roll out project break down as follows:

CAMPUS	CLASSROOM	VDIs	CAMPUS	CLASSROOM	VDIs	
DOWNTOWN	Room 233	25	WESTERN	Room D205	23	
	Room 234	25			EE Lab	16
	Room 235	25	EASTERN	Room G4D	25	
	L/C, Room 239	42			Room G4E	25
DOWNRIVER	Room N82 (Autobay)	22	NORTHWEST	Room W210	25	
	Room N84 (Autobay)	22			Room W211	25
	Room W52	25				

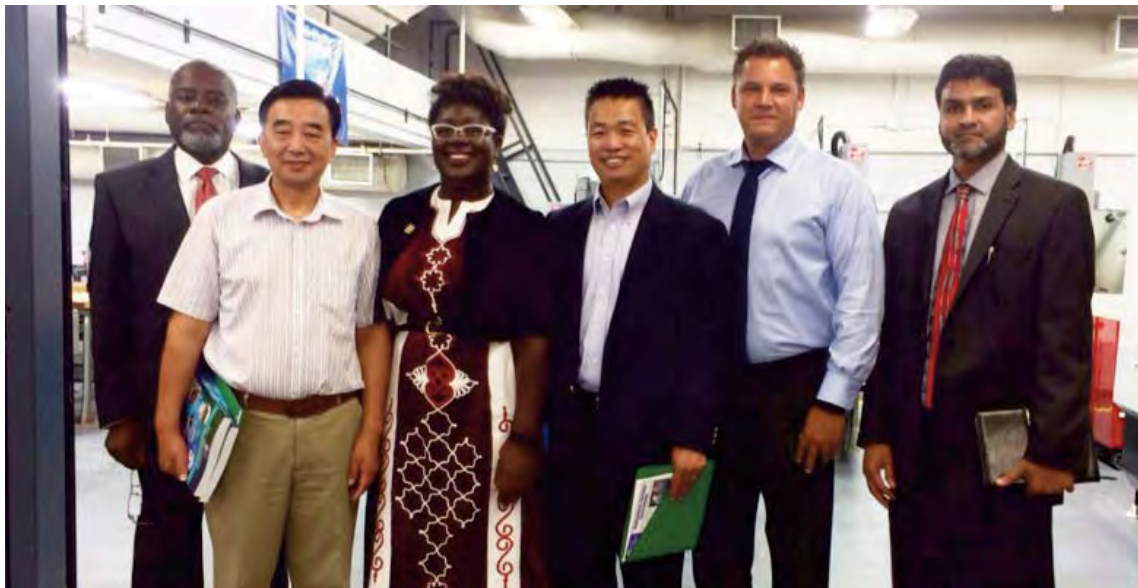
WDET Hosts Wayne County Community College District

This week I discussed “Education and the Era of Diversity” on Redline with Bankole Thompson. The panel included Dr. Fidelis D’Cunha, Provost and Sandra Hughes O’Brien, Member, Board of Governors for Wayne State University.



WCCCD's Eastern Campus Hosts China Delegation

Mawine Diggs, Matt Puwal and Furquan Ahmed met with members of the China Delegation at the Eastern Campus for a campus tour and to discuss future partnerships. Attorney Al Nelson also accompanied the group.





The Wayne County Sheriff's Department Hosts Recognition Ceremony

The Wayne County Sheriff's Department held their promotional recognition ceremony at the Downtown Campus. Attendees were supported by their family and friends. Sheriff Benny Napoleon was the keynote speaker.



Website Taskforce

The District's Website Taskforce is busy at work refining and updating information on our site. In addition to having the most up-to-date information available to our public, the taskforce is looking at ways to improve user navigation.





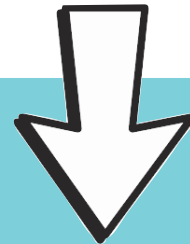
Division of Administration and Finance

The Bursar's Office will soon begin issuing the Fall 2015 financial aid refunds. Once the disbursements are audited, the District partners with Higher One to issue financial aid residual refunds to students based on their elected refund preference. It is extremely important for students to select a refund preference as soon as they receive their Higher One card to prevent delays in receiving their refund.

This Bursar's Office audits disbursements and forwards to Higher One within 14 days of issuance

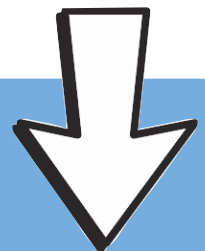


Higher One receives funds and releases them based on the student's selected preference



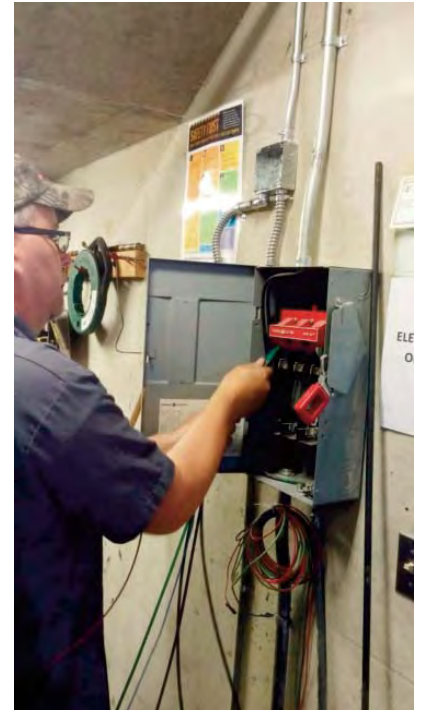
Students receive their funds from Higher One within the following timelines (based on their refund preference):

- * **OneAccount-** funds are deposited. Same day funds are sent by WCCCD
- * **Direct Deposit-** funds deposited in 2-3 business days
- * **Paper Check-** funds received in 5-7 business days



Administration and Finance

Deferred Maintenance

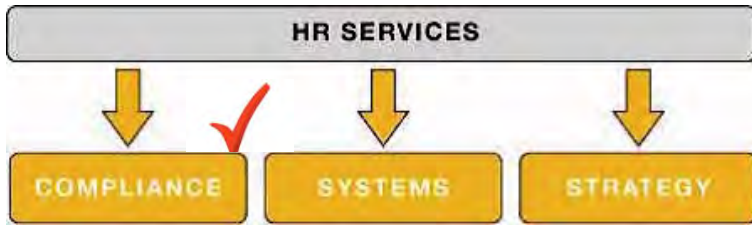


Administration and Finance

Deferred Maintenance



Division of Human Resources



Human Resources Compliance



The Division of Human Resources (HR) audits involve an objective look at the District's policies, practices, procedures and strategies to protect and establish best practices and identify opportunities for improvement. HR makes sure it is in compliance by routinely conducting reconciliations and audits.

Currently, HR and the Division of Administration and Finance are working diligently to review and audit the Fall 2015 faculty assignment and compensation.





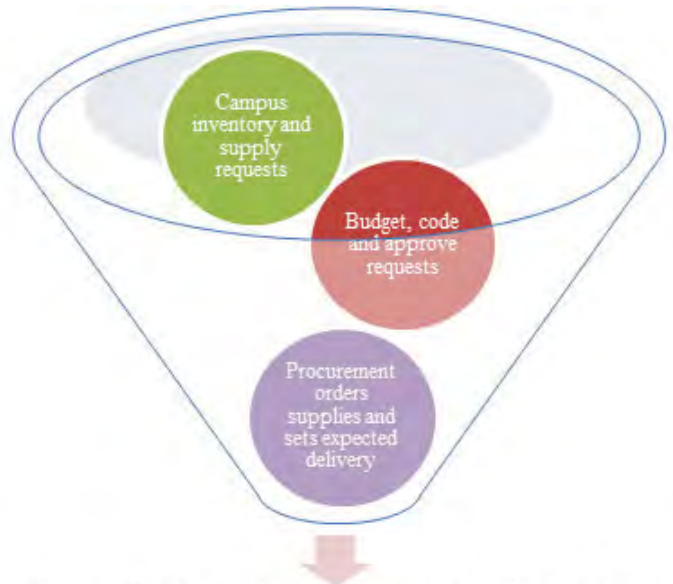
The Office of Accountability and Transparency is structured under the Division of Human Resources to engage data-driven decisions across the District. Data collected is stored in the Chancellor's Office in the Continuous Quality Improvement Audit Center.

THE KEY ELEMENTS OF CONTINUOUS QUALITY IMPROVEMENT

- A management self-audit system that looks at processes and outcomes
- Data-driven decisions
- Shared success
- Accountability
- Teamwork
- Continuous review of processes

Office of Accountability and Transparency

Continuous Quality Improvement Audit Center Procurement Supply Reconciliation



Distribution Center receives and sends out to the campuses



The Office of Accountability and Transparency and the Procurement Office are working to reconcile any outstanding instructional supply orders. As purchase orders are assigned, staff are working with our vendors to coordinate requests, costs and delivery of supplies.

Each semester alignment of supply requests is critical to the campus instructional operations. Review of campus requisitions happens almost daily to keep on target for the start of each semester.



What's Trending? Entering Students

The Division of Institutional Effectiveness (IE) conducts and participates in national research that promotes the use of data and information to make decisions. IE collaborates with divisions such as student services to collect data and information on entering students.

According to the CIRP Freshman Survey students arrive on campus with a range of skills and abilities to be successful in college life. Below are some of their experiences and expectations:



Students today interact with others in diverse environments



86% work cooperatively with diverse people



81% are opened minded towards those with different beliefs



Students begin developing productive habits in high school



86% Explored topics on their own



55% Frequently asked questions in class

Source :<http://www.heri.ucla.edu/infographics/TFS-2014-Infographic.pdf>

WCCCD Entering Student Survey

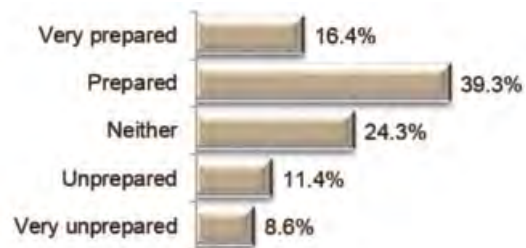
At the beginning of each fall semester IE conducts an “Entering Student Survey” which is designed to gather information concerning students’ initial encounters and experiences when entering WCCCD for the first time.



Below are some results from the Fall 2014 survey:

When I applied for college...	Respondents
WCCCD was my only choice	35.7%
WCCCD was my first choice	31.4%
WCCCD was not my first choice	32.9%
Total	100.0%

How would you rate how prepared you felt for college?



Source: WCCCD Fall 2014 Entering Student Survey

Division of Educational Affairs



Center for Learning Technology

As the Fall 2015 semester begins, here are a few tips to help students and faculty get the most out of the online learning environment.

Students:

- * Get to know your classmates
- * Pay attention to your spelling and grammar
- * Keep your comments focused
- * Don't get too personal with your posts

Faculty:

- * Get to know the students
- * Be positive with assignment feedback

Source: www.usnewsuniversitydirectory.com



Trends in Occupational Studies

The annual Trends in Occupational Studies Conference is the largest career conference in the State of Michigan. This faculty-driven conference focuses on professional development while raising awareness and participation within the career program fields. This year, WCCCD will participate in four presentations.



The Faculty Hotline is a critical tool for communication, inquiries, suggestions, and conduit for the resolution of concerns. Each week, an average of 80 messages are received. With the start of the Fall 2015 semester, the Faculty Hotline experienced a two-fold increase.



Staff from the Division of Educational Affairs worked to develop the Summer 2016 course development schedule and time matrix in preparation for campuses in the construction of spring class offerings.



LRC Resource of the Week

All WCCCD faculty and staff can now access the Community College Journal. Stay abreast of emerging news and trends as it relates to community colleges.

<http://www.ccjournal-digital.com/ccjournal/20150809?pg=1#pg1>



Recruitment and Outreach



The Division of Student Services visited multiple high schools and community centers to recruit students for the upcoming semester. Staff visited Considine Community Center and Western International High School for parent night where parents and high school students expressed their desire to attend college.

Student Activities



The Student Executive Council (SEC) is expanding its platform to foster stronger relations between students, faculty and staff. The SEC will expand to become a club. This will allow 20 student members from the various campuses in addition to the campus chair leaders to spearhead student activities at the District.



Financial Aid

Last weekend, the Financial Aid Department spent Friday night, Saturday and Sunday processing student's financial aid applications so they would have their book vouchers ready for class on the first day of classes.



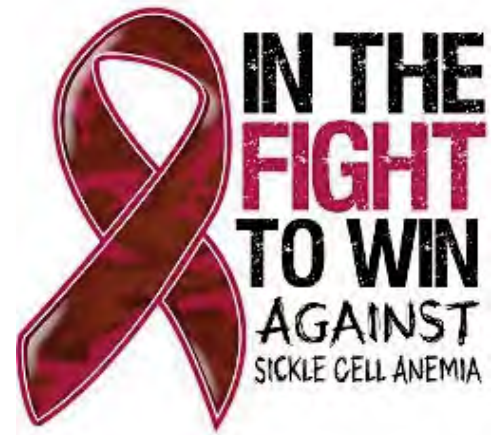
Fall 2015 Student Orientations



The School of Continuing Education and Workforce Development

Sickle Cell Awareness Walk

The School of Continuing Education and Workforce Development represented the District at the Annual Sickle Cell Awareness and Cycle Breakers Walk. More than 1,000 participants were able to be a part of a simulation walk that represented the “flow” of blood in individuals living with the sickle cell disease.



Expansion of the GED/ABE Program – Dickerson Facility



WCCCD’s Adult Basic Education (ABE) Program is structured to help inmates broaden their fundamental understanding and skills in reading, writing, and math. Our program also prepares inmates to earn a General Education Development (GED) credential. This year we are happy to share that the program was expanded at the Jail Division III facility.

The School of Continuing Education and Workforce Development



Downriver Campus

Taylor Public Schools K-5 Opening Professional Development Day

Program Objective: This workshop targeted K-5 principals and teachers. Discussion focused on the appreciation and importance of balancing literacy.

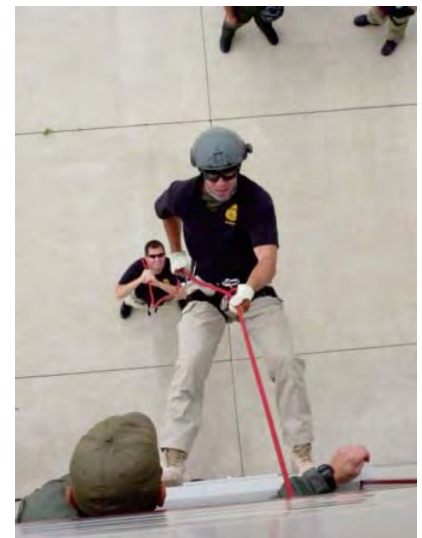
Total Continuing Education Participation: 170



U.S. Customs and Border Protection Explorers

Program Objective: Activities included the proper way to prepare, descending, and the importance of effective communications during rappelling exercises; and role play with active shooter scenarios utilizing the tower and mobile home.

Total Continuing Education Participation: 33



Taylor Rotary Meeting and Workshop

Program Objective: Participants were provided an opportunity to identify a mission, vision and goals of Rotary International as well as identify various service projects to support the community.

Total Continuing Education Participation: 43

The Guidance Center Head Start CPR Training

Program Objective: Participants learned basic first aid, CPR, AED and choking emergencies. These participants will represent the first line in cases of medical emergencies.

Total Continuing Education Participation: 35

Fire Tactics for Marathon Petroleum Emergency Response Team

Program Objective: Eastern Michigan University held a training course on fire tactics for the Marathon Petroleum Emergency Response Team. This training course consisted of classroom instruction on driving an emergency vehicle followed by practice and evaluation of the students on a Competency Course using the emergency vehicles.

Total Continuing Education Participation: 18

The School of Continuing Education and Workforce Development



Downtown Campus



Toastmasters International

Program Objective: Participants learned how to organize a speech for the best effect on an audience, understand body language and how it strengthens the message. They also learned how to choose the right visual aids to make a message clear to the audience.

Total Continuing Education Participation: 12

Grant Management Workshop

Program Objective: The Grant Management Workshop was designed to enhance the participant's understanding and management skills of the grant making process.

Total Continuing Education Participation: 33



Eastern Campus

Imagine Mentoring Conference

Program Objective: The Imagine Mentoring Program is a series of sessions on leadership, self-esteem, and learning how to build healthy relationships.

Total Continuing Education Participation: 66





Multi-Campus District



On the Move...

Andy Steeby traveled with staff from Henry Ford Wyandotte Hospital (HFW) to research the use of community paramedics with MEDSTAR Ambulance Service in Forth Worth, Texas. Medstar is one of the innovators of the community paramedicine industry.



Hispanic Heritage Festival
Saturday, September 12, 2015
10:00 am-3:00 pm
Downriver Campus

The Heinz C. Pletcher Educational and Performing Arts Center presents...

Crystal Bowersox

Saturday, September 26, 2015
 8:00pm

All About the Arts- Barbershop Harmony 2015

Monday, September 28, 2015
 7:00pm





Multi-Campus District

Meet and Greet the Campus President



The Eastern Campus hosted “Meet with the Eastern Campus President.” Mawine Diggs provided brunch for faculty and had discussions on campus procedures, faculty concerns, and suggestions.



International Programs and Global Partnerships

The International Programs Office Welcomes a New American

Oluwatosin Balogun came to WCCCD as an international student from Nigeria. We are proud to announce that he is now a U.S. Citizen. He went on to get a master’s degree from Central Michigan University, currently in Law School at Cooley Law School, part-time staff at WCCCD and serves as an adjunct faculty member.



Partnership Opportunity for Students

Staff from the International Programs Office met with Mary Lane, Director of Welcome Mat Detroit, a nonprofit organization that helps immigrants and international students find jobs.





Multi-Campus District

New Virtual Hospital at the Health Science Center



The newest addition to WCCCD's Health Science Center is the virtual hospital. The virtual hospital will be used to properly introduce students enrolled in our health science programs to a realistic hospital environment. It features 12 individual patient care stations, a clean room, a medication disbursement room and two classrooms.



Student Success Pharmacy Technology

Teracy Belser, Pharmacy Technology student, was placed on her first rotation and offered employment before completing her total hours. Since completing that rotation, she accepted employment as a Clinical Specialty Technician at Pharmacy Advantage in Henry Ford Health System. While completing her second rotation, the preceptor offered her a position at Children's Hospital of Michigan in the in-patient pharmacy.



New Electric Dental Chair Has Arrived!

In our on-going commitment to provide excellent dental services to the community, WCCCD's radiography team is excited to receive the new electric and ADA compliant dental chair.





Multi-Campus District



MARY ELLEN STEMPFLE UNIVERSITY CENTER

Out in the Community

Trustee Mary Ellen Stempfle, her husband John, Dr. Julie Corbett, Dr. Sandra Robinson, and Denis Karic represented the District at the annual "Racing for Kids" event organized by the Grosse Pointe Chamber of Commerce. WCCCD was one of the sponsors.



Center for Learning Technology

The Center for Learning Technology hosted a leadership retreat for the administrative team from Harper Woods, Hamtramck and Madison Heights school districts' high schools.

Mary Ellen Stempfle University Center-West

In the Mail...

I would like to share a note of thanks we received from MSU:

"I'm writing to express my sincere appreciation for our partnership with the Master Gardening training course. Everything went very well! It's because the associates at WCCCD are consummate professionals. Everyone has been very kind to everyone in our program. Your consideration certainly helped to make the class a success."

University Partnerships

The Mary Ellen Stempfle University Center-West partnered with Michigan State University (MSU) to offer a new section of their Master Gardener Program at the Western Campus.





Multi-Campus District



Dual Enrollment Partnerships

Staff from the Western Campus and the Division of Student Services held orientation sessions for dual enrollment instructors at John Glenn and Wayne Memorial High Schools in Wayne/Westland.



Community Partnerships

Mike Dotson and Martinus Whitfield met with Bobbie Wallace from the non-profit group Inkster Up. The purpose of the meeting was to discuss ways to offer access to certificate programs and continuing education programs for residents in the Inkster area.

Legislative Corner

House Debates Transportation Funding



Despite efforts to find sufficient support to pass the House Republican's plan to generate additional revenue for infrastructure funding, the House adjourned without a resolution. The conference committee, comprised of three members from the House and Senate, briefly met but never adopted a conference report. The solution being floated by the speaker would raise the \$1.2 billion needed for roads and bridges through \$600 million in new revenue and redirecting \$600 million in the General Fund to infrastructure funding.

Michigan Highlighted in Report on How States Approach Reverse Transfer Pathways

A new report from the Education Commission of the States looks at the various ways states are implementing reverse transfer policies to retroactively award associate degrees to students pursuing four-year diplomas. Reverse transfer programs help students understand the importance of a two-year degree and award students for previously earned credit. The report examines the reverse transfer policies in Colorado, Michigan, Missouri, Oregon and Texas in particular.

Professional Development



The Northwest Campus Facilities Team just completed a Personal Protection Equipment training course presented by the Michigan Institute for Public Safety Education.



Staff from the District Communications Management Center participated in a webinar titled "Hanging In: Working with Challenging Students."



Dr. Fidelis D'Cunha presented three workshops on Diversity and Inclusion at the National Assembly of the Society of St Vincent de Paul in Providence, Rhode Island.

WAYNE COUNTY COMMUNITY COLLEGE DISTRICT

Study ABROAD

BRING THE WORLD HOME



Study Abroad Trip to Dublin, Ireland Departs November 28, 2015!

Preparation Ongoing!

The Fall Study Abroad Program is supporting the Craft Brewing Program to promote our academic programs. Help us spread the word about our trip to Trinity College Dublin.

Recruitment Strategies by Campus

Downriver Campus: We will making classroom visits. They will also review students transcripts to determine which students meet the qualifications and contact them directly. Flyers are in the atrium and posted around the campus.

Downtown Campus: The campus had a table during New Student Orientation highlighting the Study Abroad Program. Flyers and posters have been placed throughout the campus. The Language Institute has also been provided flyers promoting the program. Flyers have been placed in 253 faculty mailboxes.

Northwest Campus: Flyers and posters are placed in strategic places/buildings. An informational table has also been set up. The campus will target students in the Computer Information System Program.

Western Campus: Mike Dotson has met with the new Craft Brewing class as well as the instructor to encourage every student to participate in the study abroad program. A table has been placed in the highest traffic area of the campus and is supported with staff to answer questions and provide information.





\$50K FOR 50 YEARS

In celebration of our 50th anniversary, we are announcing the \$50K for 50 years campaign – an effort that will help provide scholarships to students who otherwise would not be able to attend college; and will provide thousands of books to community organizations, nonprofit groups, faith-based organizations and public libraries.

For every \$2,500 pledge, 125 books will be donated to community organizations, nonprofit groups, faith-based organizations and public libraries, specific to your request. The pledge will go to support the WCCCD Scholarship Committee, the non-profit resource development arm of the District that funds the annual merit scholarship and textbook assistance program. Your support will help ensure that WCCCD fulfills its mission to the neediest of students across the 32 cities and townships, and 500 square miles the District serves.

MAKE YOUR PLEDGE NOW!

Call 313-496-2510 and put another student on the path to success!





**New Signage
Across the
District
Celebrating
our 50th
Anniversary!**





Blast from our past!



Historic WCCCD Information

There are five Learning Resource Centers District-wide. Who are they named after?

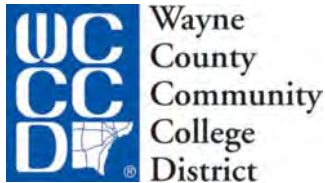
- Downriver – John Dingell
- Downtown – Arthur Cartwright
- Eastern – Joseph F. Young
- Northwest – John Conyers, Jr.
- Western – William D. Ford



District-wide Conference Day 2003



Chancellor's Weekend Memo



EDITOR: Julie Figlioli

CONTRIBUTING EDITORS

David C. Butty

Carolyn Carter

Stephanie Gilliard-Sheard

Aracely Hernandez

Tameka Mongo

Priscilla Rodgers

Susan Wiley



Mission

WCCCD's mission is to empower individuals, businesses and communities to achieve their goals through excellent and accessible services, culturally diverse experiences and globally competitive higher education and career advancement programs.

Vision Statement

Wayne County Community College District will be recognized as an institution that has achieved national and international recognition for enduring excellence as a comprehensive multi-campus community college district. WCCCD will focus on continuous self-evaluation and improvement; preparation of a highly skilled workforce in support of the Wayne County economy; student academic and career success, and leadership in strengthening the open door philosophy of educational opportunity.

SEVEN LOCATIONS - ONE COLLEGE DISTRICT



DOWN RIVER CAMPUS



DOWNTOWN CAMPUS



EASTERN CAMPUS



NORTHWEST CAMPUS



WESTERN CAMPUS

MARY ELLEN STEMPLE
UNIVERSITY CENTER



MARY ELLEN STEMPLE
UNIVERSITY CENTER
CENTER FOR ADVANCE LEARNING



MARY ELLEN STEMPLE
UNIVERSITY CENTER
WEST



WWW.WCCCD.EDU - 313-496-2600