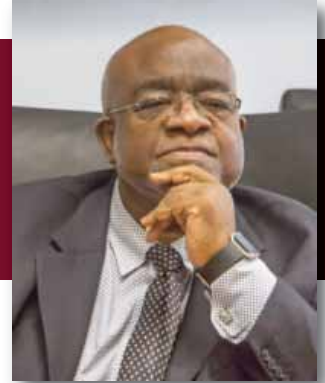


# Chancellor's Weekend Memo



March 21-27, 2020 Weekend Memo 1234

## Board of Trustees "Virtual/Telephone Conference" Meeting





## District Police Authority



### Assisting in Keeping Our Community Safe

District Police Authority patrol cars are assisting in patrolling the Corktown Business District due to businesses, restaurants, and bars having limited hours or being shut down temporarily.







# District Police Authority



As a result of the coronavirus outbreak, the District Police Authority patrol vehicle fleet was cleaned by a pathogen disinfecting service.



## We are in this TOGETHER!

The Wayne State University (WSU) Police Department donated alcohol antiseptic 80 percent topical solution (hand sanitizer) to the District Police Authority. Thank you to WSU Police Chief Anthony Holt for his tremendous support.

# Michigan Institute for Public Safety Education



The Michigan Institute for Public Safety Education donated more than 1,300 N95 masks and 70 boxes of gloves to the Henry Ford Health System. Anthony Armiak and Andy Steeby collected personal protective equipment for use at Henry Ford Wyandotte Hospital.

## Health Science Center



Trustee Scott Holiday and Dr. Abby Freeman gathered supplies from the Health Science Center to donate to local hospitals.



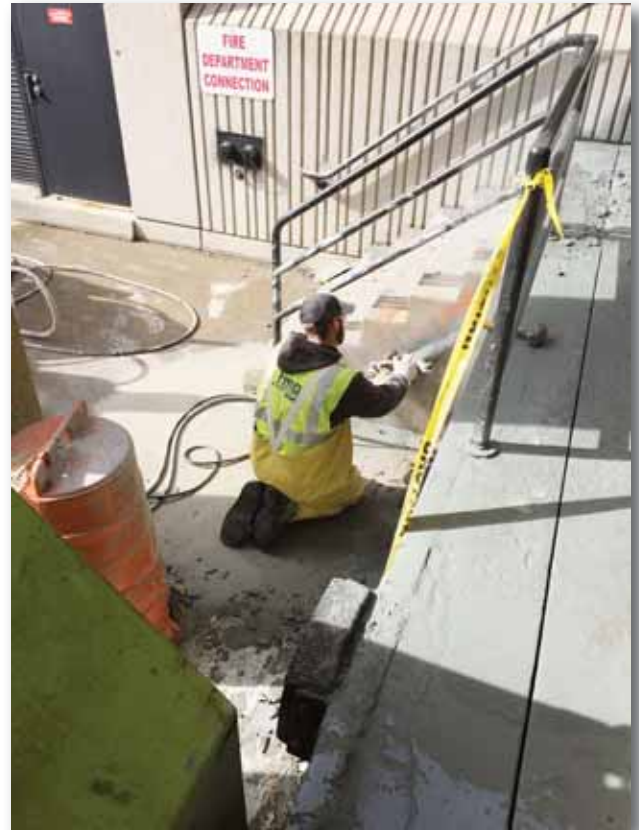
# WE MISS OUR STUDENTS! STAY HOME~STAY SAFE





## Deferred Maintenance

### Curtis L. Ivery Central Educational Complex Concrete Repair Project



# Division of Administration and Finance

Contractors from Built-Rite Services assembled new furniture inside the newly renovated Police Authority Office at the Eastern Campus.



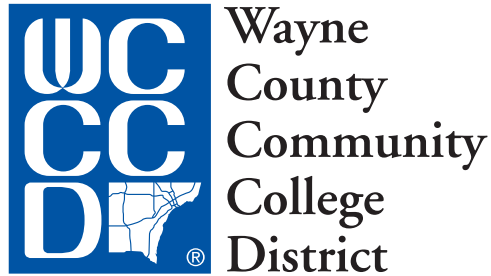


# Division of Information Technology

Infinite Technology visited the Mary Ellen Stempfle University Center-Center for Learning Technology to rewire and install new cameras.







## **Thomas E. Howard, II**

In recognition of his dedicated service and commitment to  
Wayne County Community College District  
and the Athletics Program

Dr. Ivery is recommending naming the  
Curtis L. Ivery Health and Wellness Education Center's  
Arena the

***Thomas E. Howard, II Arena***



## Best Practice Visit

### Aviation Maintenance Technology Program

Dr. Randall Miller met with Dr. Raymond Thompson, Associate Dean of the College of Aviation at Western Michigan University, to discuss details about their Aviation Maintenance Technology Program.





# Top Majors and Job Satisfaction

The Division of Institutional Effectiveness reviews local and national data to assist the District with improving programs and services offered to students. The following represents data from the Graduate Exit Survey for the top occupational majors among 2018-2019 graduates, and a national survey conducted by StudentsReview to determine job satisfaction among college majors.

## Top Occupational Majors Among 2018-2019 WCCCD Graduates

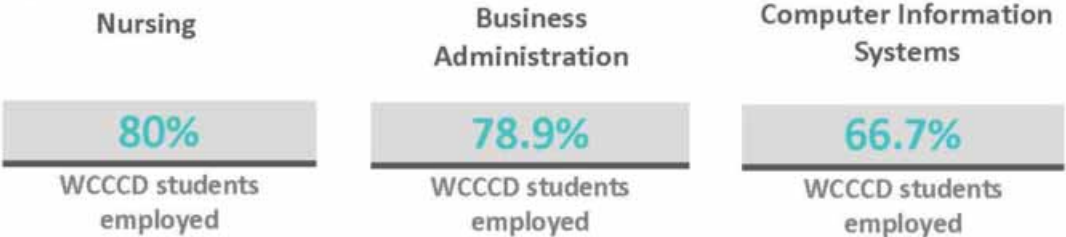


## Job Satisfaction Among These Majors Nationwide

StudentsReview conducted a national survey to measure *job satisfaction*. There were 27,335 college graduates who responded. Below are the survey results for college graduates who majored in Nursing, Business Administration/Management, and Computer Science/Information Systems. The numbers represent the percent of respondents from each major who said they are *satisfied with their job*.



Below is data from the WCCCD 2018-2019 Graduate Exit Survey and the percent of graduates from each major who said they are *currently employed*.



References:  
[http://www.studentsreview.com/satisfaction\\_by\\_major.php3](http://www.studentsreview.com/satisfaction_by_major.php3)

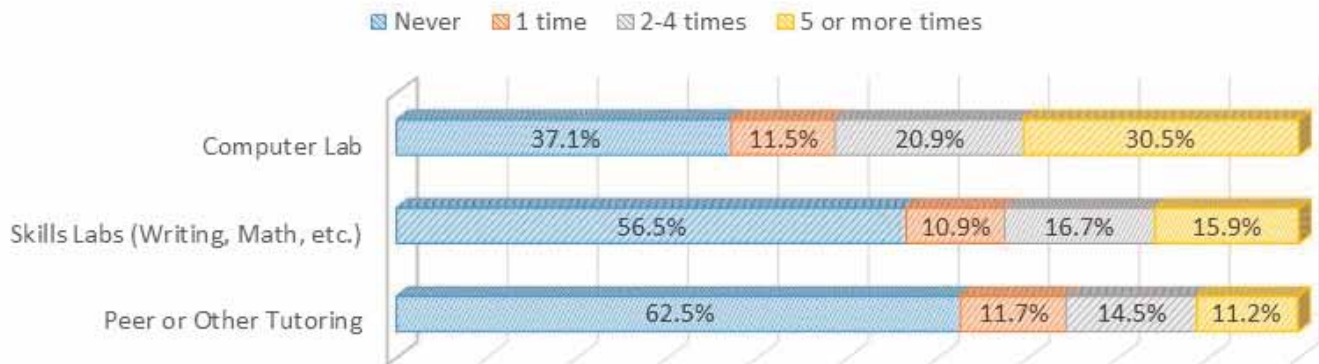


# What's Trending in IE: Student Services

The Division of Institutional Effectiveness reviews national research to assist divisions with improving the programs and services offered to students. The Community College Survey of Student Engagement (CCSSE) is a national survey to help institutions focus on good educational practice and identify areas in which they can improve their programs and services for students.

**Below you will find some sample data points from the CCSSE 2019 based upon how often the students used the services during 2019 academic year**

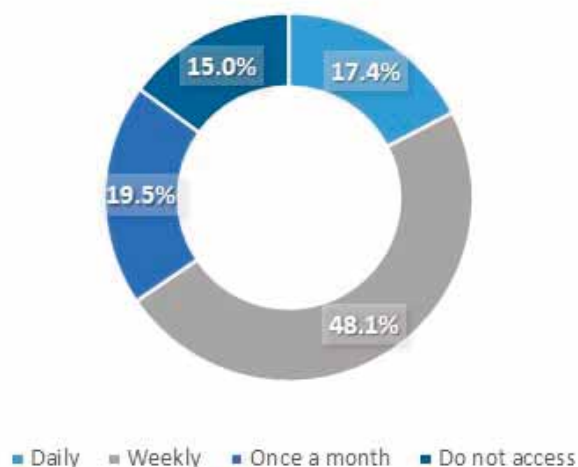
## HOW OFTEN HAVE YOU USED THE FOLLOWING SERVICES DURING THE CURRENT ACADEMIC YEAR?



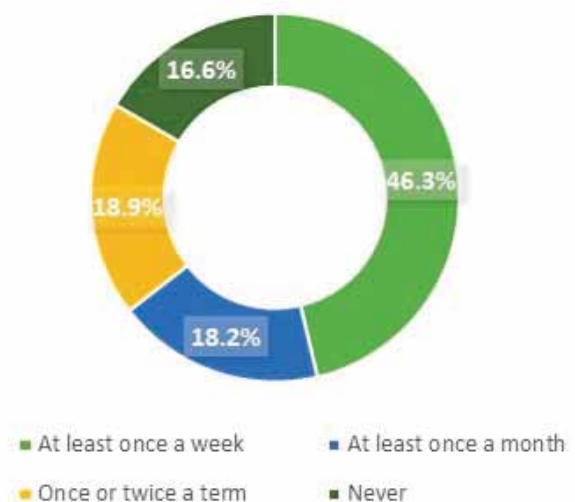
Source: <https://www.ccsse.org/survey/reports/2019/standard-reports/CCSSE-2019-coh-freqs-stuff-std.pdf>

**Below you will find some data points from WCCCD Learning Resource Center (LRC) survey and Student Self-Service Center survey conducted in Fall 2019:**

### How often do you access online services outside of Student Self-Service Center?



### How often have you used the LRC during the current academic year?







*HLC Criterion Team One discussing evidence for how the college lives out its mission*

## Reaccreditation One Criterion at a Time

### Test Your HLC Knowledge!

The Higher Learning Commission (HLC) will meet with WCCCD constituents and will want to know if its constituents are aware of certain unique facts about WCCCD.

- 1. How many criteria are used to evaluate an institution for accreditation?**
  - a) Three
  - b) Five
  - c) Seven
  - d) Ten
- 2. In what year was WCCCD founded?**
  - a) 1965
  - b) 1967
  - c) 1969
  - d) 1971
- 3. What does the Assurance Argument Report (aka-Self-Study Report) give WCCCD a chance to highlight to the HLC?**
  - a) Our strengths
  - b) Our challenges
  - c) Our unique characteristics
  - d) All of the above

# Chancellor's Weekend Memo



**EDITOR:** Julie Figlioli

**CONTRIBUTING EDITORS**

David C. Butty  
Carolyn Carter  
Aracely Hernandez  
Tameka Mongo  
Priscilla Rodgers  
Susan Wiley

## Mission

WCCCD's mission is to empower individuals, businesses, and communities to achieve their higher education and career advancement goals through excellent, accessible, culturally diverse, and globally competitive programs and services.

## Vision Statement

Wayne County Community College District will be recognized as an institution that has achieved national and international recognition for enduring excellence as a comprehensive multi-campus community college district. WCCCD will focus on continuous self-evaluation and improvement; preparation of a highly skilled workforce in support of the Wayne County economy; student academic and career success, and leadership in strengthening the open door philosophy of educational opportunity.

